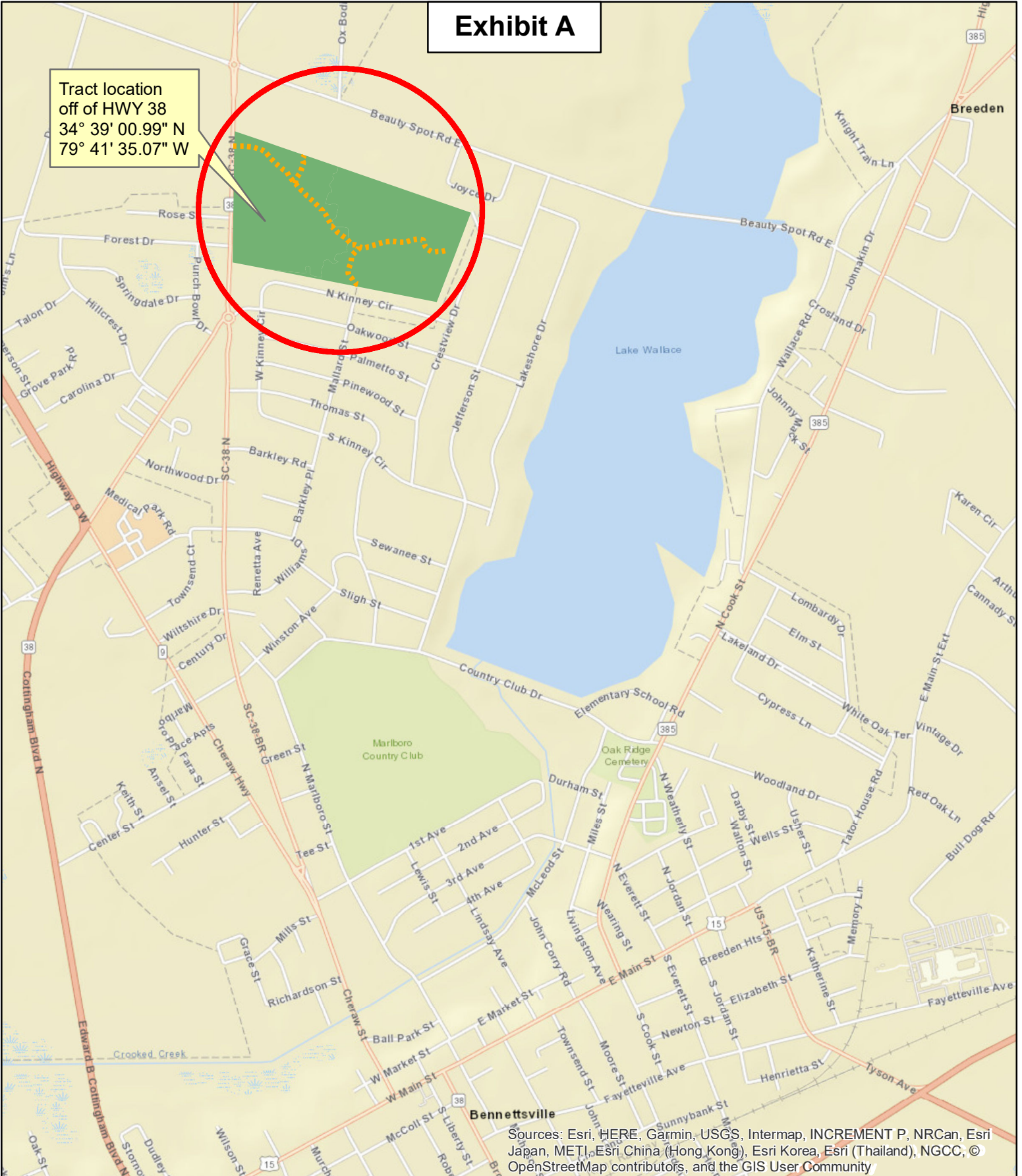
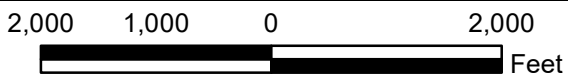


# Exhibit A

Tract location  
off of HWY 38  
34° 39' 00.99" N  
79° 41' 35.07" W



Sources: Esri, HERE, Garmin, USGS, Intermap, INCREMENT P, NRCan, Esri Japan, METI, Esri China (Hong Kong), Esri Korea, Esri (Thailand), NGCC, © OpenStreetMap contributors, and the GIS User Community



## Location Map

Andrew Jenkins  
HWY 38 Tract  
Marlboro County, SC  
03-07-2022

Kiker Resource Management LLC does not guarantee map scale and accuracy, timber stand information, acreage estimates or any other information.

