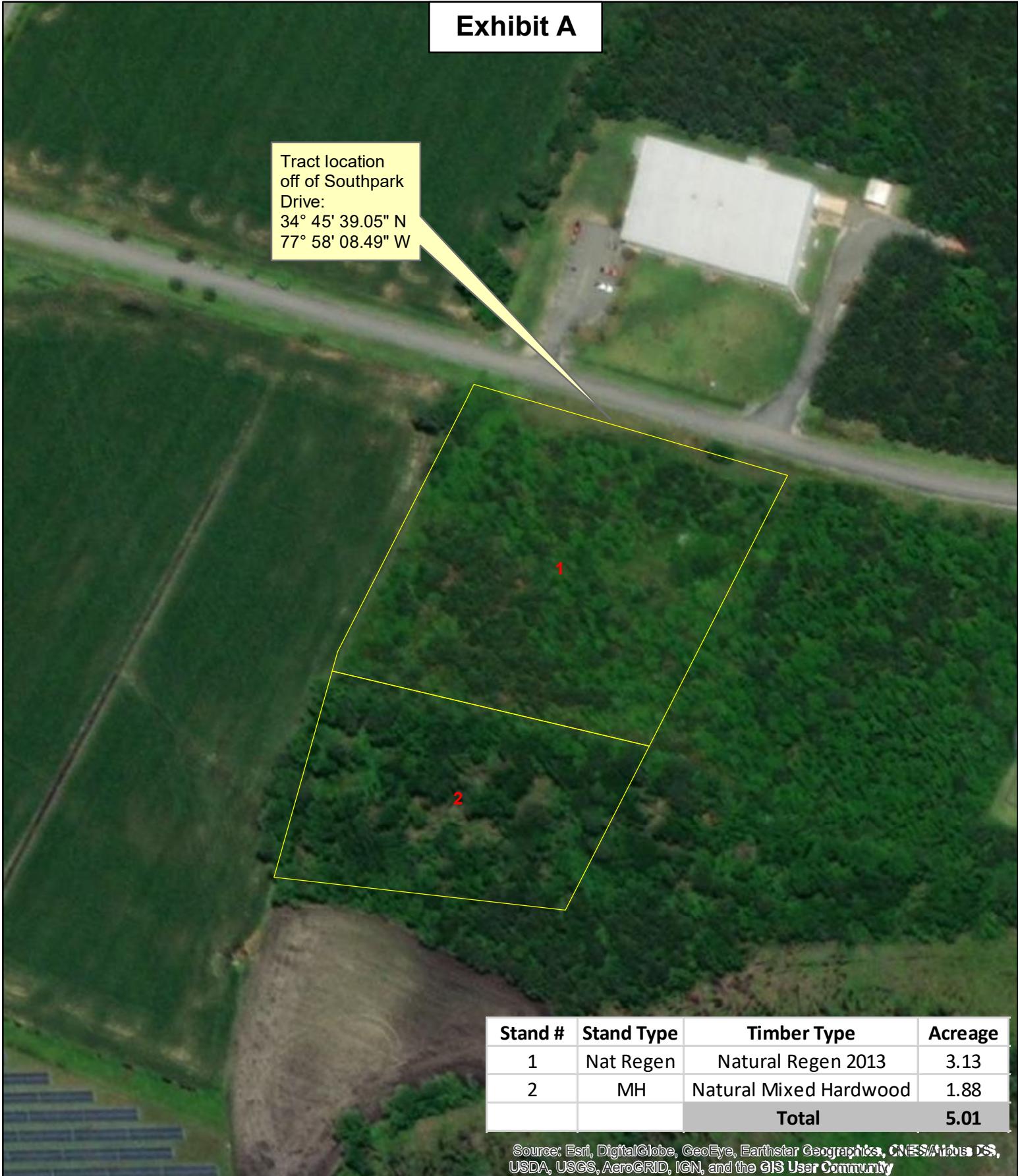


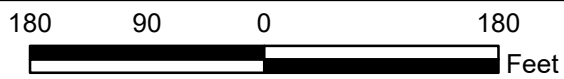
Exhibit A

Tract location
off of Southpark
Drive:
34° 45' 39.05" N
77° 58' 08.49" W



Stand #	Stand Type	Timber Type	Acreage
1	Nat Regen	Natural Regen 2013	3.13
2	MH	Natural Mixed Hardwood	1.88
Total			5.01

Source: Esri, DigitalGlobe, GeoEye, Earthstar Geographics, CNES/Airbus DS, USDA, USGS, AeroGRID, IGN, and the GIS User Community



Kiker Resource Management LLC does not guarantee map scale and accuracy, timber stand information, acreage estimates or any other information.



Location Map

Southpark Investors LLC.
Southpark Lot
Duplin County, NC
7-8-2021